

EFA CHANGES 2026

Jenny McCallum



1

WHAT IS GREENING?

1. >15 ha ARABLE = CROP / TGRS / FALLOW - **EFA req**

2. PGRS -> RESEED = PGRS NOT TGRS1, **YOU'RE OK!**

Back end forage crop & reseed Spring - ignore the crop *unless* you specifically need to upgrade a PGRS to TGRS (in that scenario, keep seed label and take a picture of crop, then next IACS TGRS1).

3. EXEMPTION >75% FORAGE = **GONE!** , YOU'RE NO LONGER OK!

4. ORGANIC EXEMPTION STILL COUNTS



20XX

PITCH DECK

2

2

THAT'S ME!!

5% OF YOUR ARABLE AREA MUST BE AN ECOLOGICAL FOCUS AREA (EFA)

Land Use		Land use area	BPS Claim	LFASS Claim
Turnips for Stock Feed	✓	3.32	3.32	3.32
Spring Barley	✓	7.60	7.60	0.00
Wild Bird Seed	✓	0.68	0.68	0.00
Permanent Grassland	X	25.10	25.10	25.10
Rotational Grass Year 1	✓	7.08	7.08	7.08
Rotational Grass Year 2	✓	12.01	12.01	12.01
Rotational Grass Year 3	✓	9.99	9.99	9.99
Rotational Grass Year 5	✓	6.00	6.00	6.00
Open Woodland (Grazed)	X	80.84	80.84	80.84
Rough Grazing	X	177.07	176.69	176.69
Generic Exclusion	X	3.24	0.00	0.00
Total		332.93	329.31	321.03



TOTAL ARABLE = 46.68ha

**EFA REQUIRED @ 5%
= 2.34 ha**

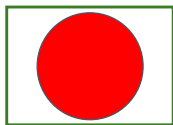
TGRS 1-5 = TEMPORARY GRASS EX ARABLE & PGRS = PERMANENT GRASS (6 YR+)

20XX

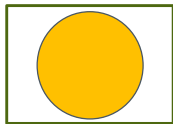
3

3

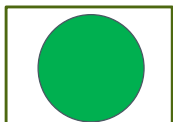
WHAT ARE YOUR OPTIONS?



MARGINS x 1.5
UNHARVESTED CROP x 1.5
AGRO FORESTRY x 2



HERB & LEGUME PASTURES x 1.5
LOW INPUT GRASSLAND x 0.2
NITROGEN FIXING CROPS x 1
LOW DENSITY TREES x 2



HEDGES length x 10m²
CATCH CROPS x 0.3
COVER CROPS x 0.3
FALLOW x 1

20XX



4

PROS & CONS:

OPTION	MULTIPLIER	POSITIVES	NEGATIVES
MARGINS	X 1.5	GOOD MULTIPLIER COULD USE A DENSE TURF MIX TO ESTABLISH- NEEDS 3 FLOWERS	WIDTH OFTEN WRONG (3-20m) DIRTY WEEDS/DISEASES GRAZE AFTER 15 JUL (UNLESS NEXT WATER)
UNHARVESTED CROP	X 1.5	COULD USE POOR END RIGS 6-20m GOOD HABITAT, CAN UNDERSOW	DIRTY WEEDS/DISEASES NO N FERT, NO SPRAY
AGRO FORESTRY	X 2	HMM!	NEEDS TO BE IN AN AGRO FGS DON'T GET FGS £
HERB & LEGUME PASTURES (3 DIFF. LEG/HERB)	X 1.5	CAN USE LIME, P & K AND MANURE NO USAGE RESTRICTIONS, CUT/GRAZE CAN ESTABLISH IN 2026 BY 1 JULY	MUST BE EX ARABLE (2025) NOT PGRS NO SPRAY CALLED TGRS SO LASTS 5 YR MAX (COULD THEN BE FALW)
LOW INPUT GRASSLAND	X 0.2	NO REAL RESTRICTION ON GRAZE/CUT CAN BE PGRS CAN CUT (3m MARGIN) GRAZE AFTER	NO WINTER FEEDING OF BALES ON DIVERSE GRASS OR 10m TO WATER NO FERT ONLY FYM/ORGANIC FERT.

5

5

PROS & CONS:

OPTION	MULTIPLIER	POSITIVES	NEGATIVES
NITROGEN FIXING CROPS	X 1	GOOD N/ORGANIC MATTER OPTION	NEEDS A MARGIN MUST BE 2 DIFFERENT CROP BLOCKS
LOW DENSITY TREES (min 0.5 ha) 20-50 PER ha	X 2	PARKLAND EFFECT- 1 PER ROOM!! SHADE FOR STOCK	DIFFICULT FOR ARABLE CHOOSE TREE SPECIES WISELY SOME ARE TOXIC TO STOCK!
HEDGES	LENGTH X 10m ²	BETTER USE THAN AECS EXISTING MGMT @ 11p/m	NO GAPS >5m & MAX 3m FROM CENTRE MUST BE ADJACENT TO ARABLE or EFA ALL YOURS FOR X 10m ² RATE
CATCH CROP = UNDERSOWN CEREAL	X 0.3	MIGHT DO RESEED THIS WAY ANYWAY Or SKIFFY FOR WINTERING SHEEPIES! CAN MAKE INTO ARABLE SILAGE	LEGUE OR DIVERSE GRASS IS ADVISORY ONLY NOT ABS. RULE CAN'T CLAIM ARABLE SILAGE FOR LFASS (NOT ASSF USE CEREAL CODE)
GREEN COVER = SOWN FOR POST HARVEST		GET OUT OF JAIL OPTION NOW HAS BRASSICAS ON THE LIST CAN ASK TO MOVE UP TO END OCT. CAN NOW GRAZE WHEN ITS READY BROADCAST INTO STANDING CROP FOR EARLY GERMINATION	MUST BE SOWN BY 1 NOV. BAD YEAR GET NOWT NO SPRAYS SO NO LIQUID SUNSHINE.

6

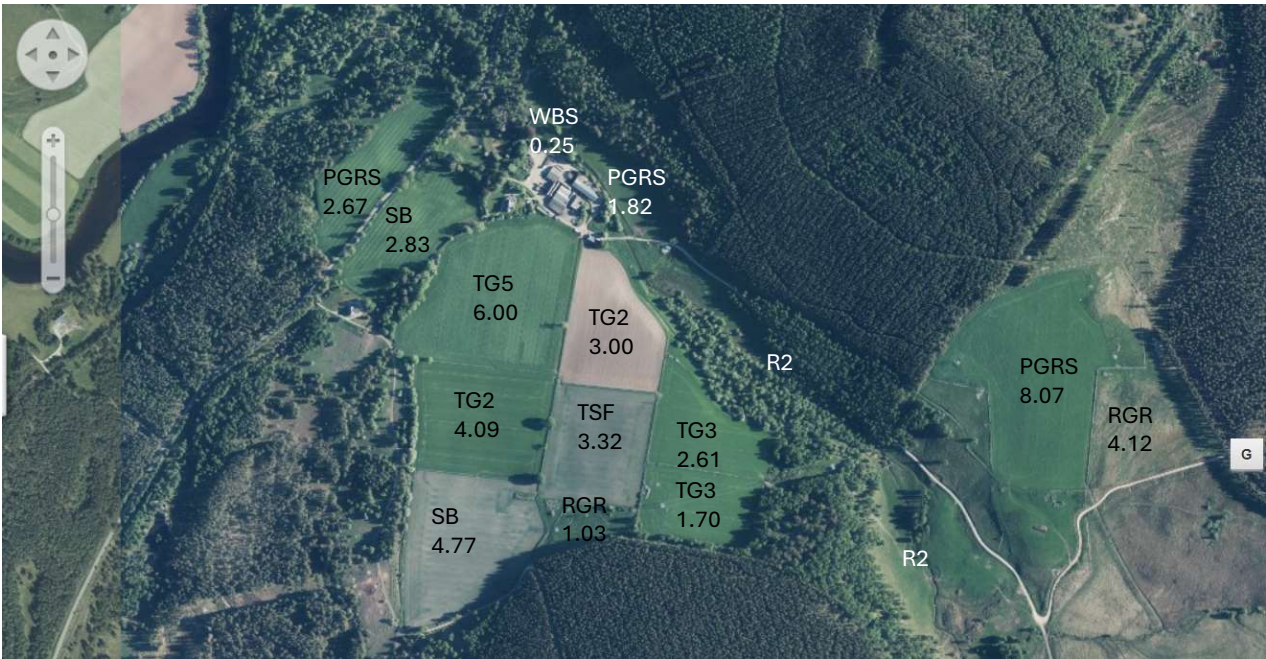
6

PROS & CONS:

OPTION	MULTIPLIER	POSITIVES	NEGATIVES
FALLOW – USING TGRS	X 1	CAN STITCH IN FLOWERS YEAR 1 (CLOVER/VETCH- USEFUL) CAN USE FERT/MANURE TO ESTABLISH CUT HAY AFTER 15 JULY THEN FREE TO GRAZE	NOW NEEDS 3 FLOWERS IN SWARD STOCK OFF 15 JAN NEED TO CALL TGRS5 FALW BEFORE IT DROPS OFF INTO PGRS
FALLOW – USING WBS	X 1	ACTUALLY ALLOWS BRASSICA CROP JUST INCLUDE WHAT’S NEEDED REST OF BRASSICA FIELD COULD BE SPRAYED! ALLOWED FERTILISER- PROPER CROP	STOCK OFF 15 JAN NEEDS TWO BRASSICAS NO SPRAY
FALLOW – AECS GREEN MANURE	X 1	NO BRAINER IF IN AECS RETAINED WINTER STUBBLE FOLLOWED BY GREEN MANURE. STUBBLE IS MANAGEMENT PAYMENT SO GREEN CROP IS COMPATIBLE WITH EFA NO LOSS OF AGRI £	NEED TO BE IN APPROVED AECS !?

7

7



8

8

LET'S WORK IT OUT:

EFA CC = UNDERSOWN GRASS TO CEREAL CROP

eg 4.77 ha SB x 0.3

= **1.43 ha**

EFA REQUIRED @ 5% = 2.34 ha

UNDERSOWN CEREAL

CAN INCLUDE BEANS

CAN CUT FOR ARABLE SILAGE
BUT NEEDS TO BE CLAIMED
AS MAIN CEREAL SO **NO**
LFASS

MAINTAIN CATCH CROP TILL
31 DEC MIN

GOOD FOR **WINTERING** –
SKIFFY OR AS PART OF
NORMAL **GRASS ROTATION**

9

9

LET'S WORK IT OUT:

EFA FAL = WBS (AKA MIXED BRASSICAS!!)

eg 3.32 ha MBSF X 1.0
(code for mixed brassicas as stock feed)

= **3.32 ha**

EFA REQUIRED @ 5% = 2.34 ha

STOCK OFF 15 JANUARY

CAN'T SPRAY OFF PRE SOWING

CAN USE MANURE OR BAGGED
FERTILISER TO AID
ESTABLISHMENT

GRAZE ANYTIME **AFTER 15 JULY**

EXTEND GRAZING SEASON +
MANURE ON STUBBLES,
COLLARS NOPE, STRIP WIRE YES

GOOD WINTERING SHEEP
OPTION

10

LET'S WORK IT OUT:

EFA FAL = TGRS (DIVERSE SWARD)

eg 2.61 ha TGRS3 OR FALW (YR 5 +) X 1.0

= **2.61 ha**

EFA REQUIRED @ 5% = 2.34 ha

STOCK OFF 15 JANUARY

CAN'T SPRAY OFF PRE SOWING

CAN USE MANURE OR BAGGED FERTILISER TO AID ESTABLISHMENT OF 'FLOWERS'

FLOWERS X 3 = CLOVERS/VETCH (USEFUL)

GRAZE OR CUT ANYTIME AFTER 15 JULY

11

11

LET'S WORK IT OUT:

EFA GC = GREEN COVER AFTER HARVEST

eg 2.38 ha SB X 0.3

= **0.71 ha**

EFA REQUIRED @ 5% = 2.34 ha

SOW AFTER HARVEST – GREAT IF EARLY – AND BY 1 NOV. LATEST

CAN NOW GRAZE **WHEN READY**

CAN SOW ON TGRS AFTER SILAGE

EXTEND GRAZING SEASON + MANURE ON STUBBLES, COW COLLARS NOPE!!

CROP OPTIONS NOW INCLUDE KAE, STUBBLE NEEP, FORAGE RAPE, BEANS & CLOVERS

12

12

LET'S WORK IT OUT:

EFA HLRP = HERB/LEGUME MIX

eg 2.83 ha ex SB to TGRS (1-5 ONLY) X 1.5

= **4.24 ha**

EFA REQUIRED @ 5% = 2.34 ha

MUST BE ON ARABLE LAND

AT LEAST 3 HERBS/LEGUMES

CAN APPLY LIME P & K

MANURE OK

NO SPRAY NO BAGGED NITROGEN

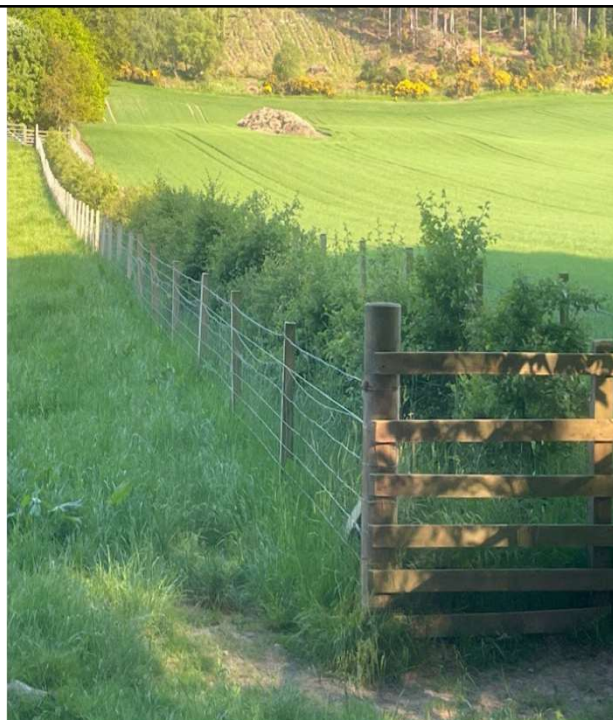
YEAR 1 CAN ESTABLISH BY 1 JULY

**TGRS CODE TILL TGRS5 -> PGRS
CHANGE TO FALW IN YR 5 ? X 1 OR
BACK TO CROP FOR A YEAR**

13

HEDGE

- 450 m new hedge under AECS, in future 'existing'
- @ 11 p/m = £49.50
- 450 m adjacent to arable
- $450 \times 10\text{m}^2 = 4,500\text{m}^2 = 0.45 \text{ ha}$



14

FAVOURITE EFA OPTIONS FOR GRAZING STOCK?

1. EFA FALLOW 15 Jan to 15 July: **x1**

- a) TGRS (with 3 flower = clover/vetch) – see sheep through early winter, off 15 Jan or before, cut hay after 15 July (keep some/sell surplus). **ALTERNATIVE = EFA HERB & LEGUME **x1.5!****
- b) WBS (two off list inc. brassicas !!) establishment is allowed fertiliser.

2. EFA CATCH CROP: **x 0.3**

- a) Under sow the main crop = cereal, OSR or maize. Beans can also be sown in mix with cereals
- b) Can cut for arable silage **BUT** must go on SAF as the main crop eg SB not ASSF – so no LFASS
- c) Catch crop must be maintained till at least 31 Dec

3. EFA GREEN COVER- establish by 1 Nov: **x 0.3**

- a) Increased eligible crops to include kale, stubble turnip, forage rape, beans, various clovers
- b) Can be broadcast into standing crop and can now be grazed when ready (previously after 31 Dec)

15



DESIRABLE ATTRIBUTES? -are you sold on sheep yet??



1. Right soil type, drainage?
2. Shelter?
3. Run back, dry lie?
4. Accessible?
5. Water?
6. Enough feed to see them through?
7. Contingency plan?
8. Fencing?

1. What sort of sheep?
2. How many & for how long?
3. Vaccinated, mineral bolus, dipped?
4. Management?
5. When do you need on to plough?
6. Do you have jobs for them?
7. What crop would work best for both?

16




WHAT'S NOT TO LIKE? EFA/ARABLE/LIVESTOCK

1. EFA OPTIONS CAN STRETCH THE GRAZING SEASON & INTRODUCE ADDITIONAL ORGANIC MATTER, IMPROVE SOIL HEALTH AND REDUCE NEED FOR NITROGEN TO FOLLOWING CROP.
2. KEEP STOCK OUT OF THE SHED REDUCING BEDDING COSTS MANURE STRAIGHT TO FIELD, POTENTIAL BETTER HEALTH OF STOCK.
3. CLEAN ARABLE FIELD MARGINS, REDUCE WEED SEED BURDEN & REMOVE DECAYING MATERIAL.
4. POTENTIAL TO GRAZE WINTER CEREALS, REDUCE DISEASED PLANT MATERIAL AND ENCOURAGE TILLERING.
5. ADDITIONAL MARGIN OVER CROPPING, LOW RISK INCOME (WINTERING)

17

USEFUL LINKS:

1, SCOT GOV GREENING GUIDANCE 2026
<https://www.ruralpayments.org/topics/all-schemes/basic-payment-scheme/basic-payment-scheme-full-guidance/greening---bps/greening-guidance-2026/>

2.OVERWINTERING STRATEGIES:
<https://www.sruc.ac.uk/media/ionjj3r/outwintering-strategies-booklet-497866-sep-2022.pdf>

Any queries you can drop me an email to jenny@mccallumagri.co.uk

18