

LOTHIANS MONITOR FARM

Farm name	Preston Hall & Saughland, Pathhead, Midlothian
Meeting Number	17 – Post Harvest Round up
Meeting Date	Friday 16th October 2019
Next Meeting	TBC
Report date	24th October 2019

Preston Hall Farms and Saughland Farm independently run arable and livestock enterprises at Pathhead Midlothian. Pete Eccles is farm manager at Saughland and Bill Gray at Prestonhall. The businesses work collaboratively on arable operations. Livestock at Saughland; 65 AAX suckler cows running with Lim & Hereford bull plus 2,300 Chev, Lley, Aberfield, Mule ewes with Tex, NZsuff, Abermax lambs at foot on rotational grazing system. Arable at Prestonhall; Combinable Crops, WW 175ha, WB 80ha, SB 160ha, WOSR 65ha, WO 20ha, Grass 75ha.

Community Group Chairman, Willie Thomson, welcomed 35 farmers to the Monitor Farm post-harvest meeting at Preston Hall. Willie ran through the agenda for the day and explained how some of the agenda items had been decided following Fergus Ewing’s visit to meet the management group. There has also been some very positive feedback received from Scottish Government following the visit.

KEY MESSAGES

Bill Gray - (Harvest Results 2019)

- Tough harvest but yields have held up well but no WW sown to date
- 2/3rds Winter Barley sown and all Winter Oats are sown
- Winter Barley Yield over 9t/ha and currently gaining £15/t benefit with having grain storage
- Winter Wheat Yield 10.12t, best field done 11t/ha, Zulu done well for 2nd Wheat at 10.47t/ha
- First Wheats - Gross Margin £1,000/ha (VC £540), 2nd Wheats - Gross Margin £900/ha (VC £560)
- 1st Wheats Barrell 10.73t/ha, Elation 9.32t/ha
- Winter Barley – Possibly Best Ever 9.12t/ha Gross Margin £860/ha (VC £500/ha)
- WB 3rd behind 2nd WW in league table -straw sales help
- Spring Barley average– 7.54t/ha - Gross Margin £950/ha - Laureate consistently 1t/ha better than concerto
- Oats – Disappointing 7.68t/ha – Gross Margin £650/ha and would be around £800/ha if straw included
- OSR performs well – 4.28t/ha – Gross Margin £870/ha



Gavin Mowat - (Scottish Land and Estates)

- Local authorities struggle for resources
- Opportunities for engagement with planners reduced
- Plan well ahead as Local development plans moving from every 5 years to a 10-year cycle

- Farmer unlikely to see significant change on the ground
- Ultimately the relationship with your planning officer will be key
- Relaxation in section 75 agricultural ties on houses

Lyn White – Scottish Forestry

- [Central Scotland Green Network \(CSGN\) area](#)

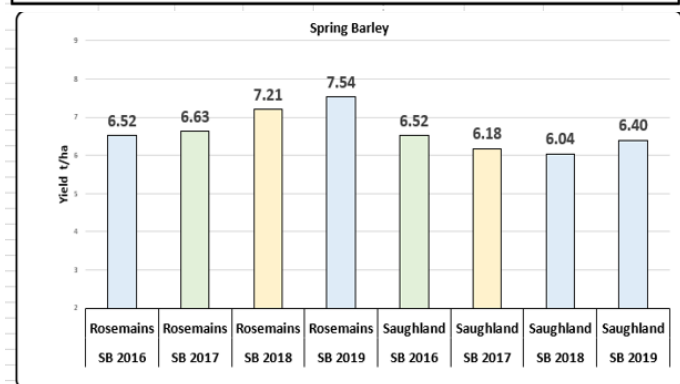
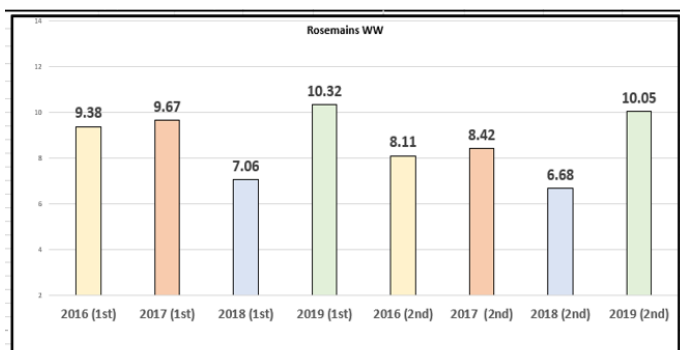
Peter Collier - AHDB Arable Markets

- US harvest Delays, Bra & Arg lack of rainfall, Global surplus reducing, Domestic Stock high, Brexit scenarios

Jonny Williams – Farmstock Livestock Market

- Average year for sheep but potentially they will get short, carbon bigger threat than vegans, Cattle 330p/kg

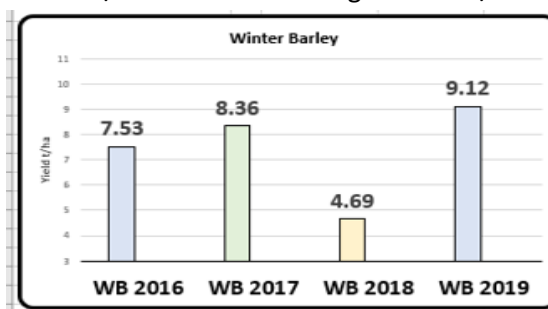
Bill Gray - (Harvest Results 2019)



Bill presented the Preston Hall harvest results 2019 and discussed all aspects of performance across Winter Wheat, Winter Barley, Spring Barley and Oil Seed Rape.

Although it has been a challenging harvest the results have been pretty good. Bill presented some draft figures on where he thinks the crops are to gross margin level. The 1st Winter Wheat has done 10.32t/ha and left a gross margin of £1,000 after variable costs of £540/ha. The 2nd WW did 10.05t/ha and left a Gross Margin of £900/ha after £560 of variable costs.

The Winter Barley has done possibly the best ever at Preston Hall at 9.12t/ha and a Gross Margin of £860/ha, whilst Spring Barley did 7.54t/ha and a Gross Margin of £950/ha.



Bill discussed some of the varieties and their performance.

Barrell has performed well again and Zulu had done well as a 2nd WW. The average sale prices were based on a combination of sold and still to go but Winter Wheat is sitting at £143/t, Winter Barley at £135/t, Spring Barley £173/t, OAst at £130/t and OSR at £330/t.

The Preston Hall harvest results will be available on the Monitor Farm Hub.

Gavin Mowat (Scottish Land and Estates) - New Planning Bill

The Planning (Scotland) Act 2019 was given Royal Assent in July after being passed by MSPs at the Scottish Parliament by a majority of 78 votes to 26. It has been described as the most amended piece of legislation in Holyrood’s history, with more than 380 amendments in total being considered.

Gavin gave the community group a brief run through the key changes in the New Planning Bill and pointed out some areas which may impact farming businesses. Gavin stressed that the local authority planning department is stretched with limited resources which may slow up the planning process but ultimately the relationship with the local planning office will remain key regardless of any changes to the planning bill.

Gavin mentioned that opportunities to engage with the planning will reduce with a significant point from the new Bill being the move from a 5-year to 10-year cycle for local development plans. On a positive note there will be a relaxation in the guidance towards section 75 (Agricultural Ties) on new builds and opportunity to get section 75 restrictions lifted.

Lyn White – Scottish Forestry

Lyn explained the various forestry funding available including the Central Scotland Green Network grant uplift which is available to many in the group and the free woodland assessments available to farmers. All links and information from Lyn’s presentation are available on the Monitor Farm hub.

Peter Collier AHDB – Arable Market Update

Peter gave an in-depth run through of the global and domestic outlook. The full presentation can be viewed on the monitor farm hub

Current Global Market Drivers

Domestic grain outlook

<p>US Harvest</p> <ul style="list-style-type: none"> • Delays to US harvest of spring wheat and maize • Yield cuts and area questions? 	<p>Brazil and Argentina</p> <ul style="list-style-type: none"> • Lack of rainfall delaying planting and downgrading production outlooks 	<p>Global Surplus Reducing</p> <ul style="list-style-type: none"> • The well supplied outlook for 2019/20 is being eroded reversing the market sentiment 	<p>Large exportable surplus</p> <ul style="list-style-type: none"> • Fast export pace required for the remainder of the season to avoid stock build-up 	<p>2020 available supply</p> <ul style="list-style-type: none"> • Large end season stocks, with continued shift to cereals likely to keep large available supply in 2020 	<p>2020 Catch 22</p> <ul style="list-style-type: none"> • Brexit deal <ul style="list-style-type: none"> • Strengthening currency • Hard Brexit <ul style="list-style-type: none"> • Tariff barriers and export friction
---	---	--	--	--	---

Jonny William Farmstock Scotland – Livestock Market Update

Johnny William gave a detailed update on the current livestock market with a particularly positive and encouraging outlook within the lamb sector.

The lamb market this year has been on par with the 5-year average, with the last two years being exceptional. Kill out weights have dropped from 19.37kg to 19.14 on average for September 2018 to September 2019 respectively. There is currently less over fit lambs coming forward down from 3-4%, to 1% along with a higher percentage of under finished lambs (5%). Jonny assumes that lambs are being sold quicker possibly driven by result of Brexit fears? Also, there was overall reduction in the lamb crop of 1.5% and Jonny’s current market predictions would suggest there may be a shortage within the later months of the year.



Jonny went on to highlight the growing global issues with an increase in swine flu in China increasing its global purchase of other red meat as an alternative protein source. China's purchases of red meat are up by 80% pork, 10% beef and 5% Lamb. In addition, there are growing concerns in the southern hemisphere due to severe droughts effecting the lamb exports from countries like Australia. With these two global issues and the current trends within the British lamb sector there could be an increased demand for lamb going forward.

For the cattle sector Jonny voiced that not much has changed and with higher numbers continuing to come forward and putting pressure on the trade. He also highlighted that we need to be aware of the knock-on effect that the additional dairy bred bull calves could have in 12-18 months when they enter into the beef market. There are indications that a 2% reduction in red meat consumption will be seen as consumers move to a more flexitarian based diet.

Pete Eccles, Graham Lofthouse, Bill Gray and Fergus Younger – Cattle Outwintering Project

Peter, Graham and Fergus talked through the cattle outwintering project which created great discussion from both the Livestock and the arable farmers. Bill admitted that there was some nervousness to how the project would work for the arable but admitted that there could be significant benefits and it will be very interesting to see how the project develops.

The field layout was discussed at length and the agreed approach is to strip graze across the field allowing the cattle two bales of silage and three bales of straw every second day. The silage bales are set up in two rows but Peter may modify this slightly following the meeting and the straw bales are randomly placed where they were baled. The silage bales will be fed in round feeders which are moved with the fence and the straw bales rolled out. There will be no back fence which allows the cattle to get shelter if required.

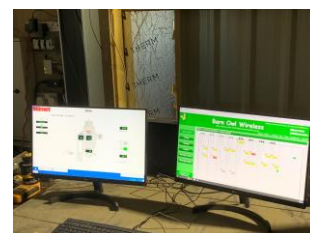
50 Luing cows will move through from the west during week 28th October and will return home early March for calving. Ad-lib mineral buckets will be provided and the ration worked out based on the silage analysis.



FARMERS UPDATE

Bill gave a run through of how the new grain store had worked during harvest and specifically how the new barn owl system functioned. He has also made £15/t on some grain storage due to having the storage facilities in place.

Peter gave a brief update on the livestock enterprise and the cattle out wintering project plus some of the challenges the sub-let potato contractors have faced.



FACTS & FIGURES DISCUSSED

- All facts and figures are on the Monitor Farm Hub

ACTIONS

Next Meeting – TBC

FACILITATOR CONTACT DETAILS

Colin MacPhail 07747 046461 colin@macphailconsulting.co.uk

Fergus Younger 07771 966649 Fergus.younger@saos.coop

